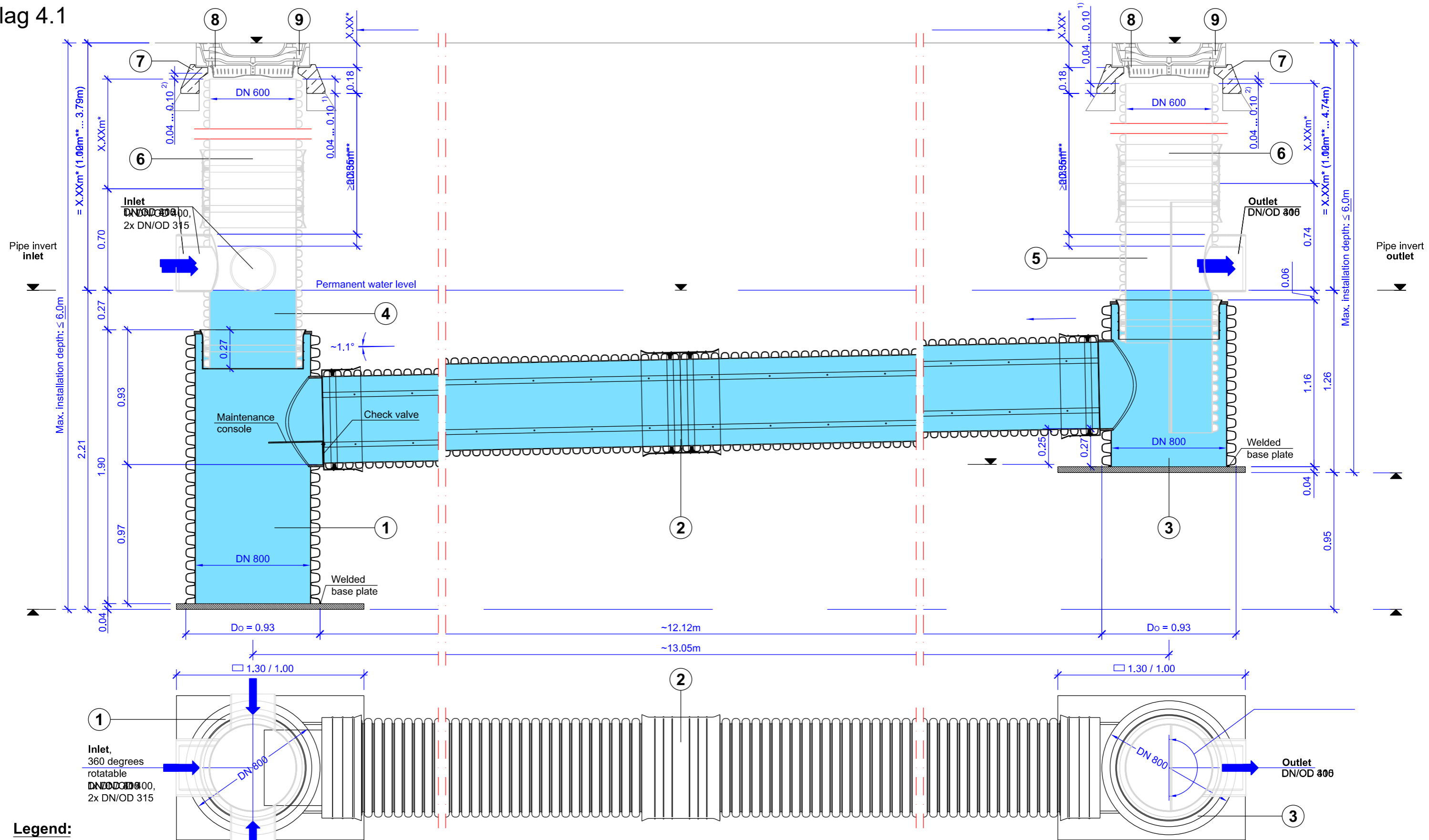
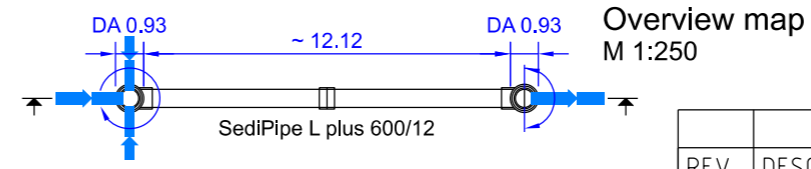


Bilag 4.1



- Legend:**
- ① Start shaft bottom DN 800 with maintenance console
 - ② Sedimentation path DN 600 with lower and upper flow separator
 - ③ Target shaft bottom DN 800
 - ④ Inlet set DN 600
 - ⑤ Outlet set DN 600 with immersion wall
 - ⑥ Extension pipe DN/ID 600
 - ⑦ BARD-ring (class D concrete support ring), inside Ø 745 mm
 - ⑧ Dirt trap acc. to DIN 1221
 - ⑨ Shaft cover CW 610
- ** ... see installation and maintenance manual
 1) ... Insertion area
 2) ... Compensating area

In this technical drawing is a representation of a standard system. The delivered system can be object-based, notwithstanding the illustrated here.
Subject to technical / constructive changes!



FRÄNKISCHE

DATE: 2019-02

DRAWN/CHECKED BY:

PROJECT: **Longitudinal section/Top view + Overview map**

SediPipe L plus 600/12

Inlet/Outlet DN/OD 305, same level

PROJECT NUMBER: 1- XX XXX

REV.	DESCRIPTION	DATE	NAME

SCALE: **1: 25**

DRAWING NO.: **2b**